





The following hoses are conventional woven jacket fire hoses with synthetic liners. Prices shown are for bulk hose without fittings. For couplings and accessories, see Green Line Fitting Catalog.

Note: Other Green Line discharge hoses are often used in the place of jacketed fire hoses for such applications as washdown and stand-by forest fire protection. Please see G1372 and G1373 in the Water Hose section.

G1921... SINGLE-JACKET INDUSTRIAL & FORESTRY

A top quality, all synthetic, rubber lined hose for indoor and outdoor use.

Tube: Black rubber.

Cover: White 100% synthetic fabric.

G1942... DOUBLE-JACKET INDUSTRIAL

Double-Jacket Industrial is a heavy-duty, all-synthetic hose with a rubber lining for higher pressures and severe applications.

Tube: Black rubber.

Cover: White 100% synthetic fabric.

G1921

I.D.	Part Number	Bowl Size	Working Pressure	Test Pressure	Weight per ft	PRICE PER FOOT Cut	Std Length	Standard Lengths
G1921... Single-Jacket Industrial & Forestry:								
1"	G1921-100	1 ³ / ₁₆ "	150 psi	300 psi	0.10 lb	\$1.60	\$1.35	50 or 100 ft
1 ¹ / ₂	G1921-150	1 ¹¹ / ₁₆	150	300	0.16	1.90	1.60	50,66,75,82 or 100
2	G1921-200	2 ¹ / ₄	150	300	0.20	2.50	2.00	50,66,75,82 or 100
2 ¹ / ₂	G1921-250	2 ³ / ₄	150	300	0.27	2.80	2.40	50,66,75 or 100
G1942... Double-Jacket Industrial:								
1 ¹ / ₂	G1942-150	1 ¹³ / ₁₆	300	600	0.35	2.90	2.40	50 or 100
2 ¹ / ₂	G1942-250	2 ¹³ / ₁₆	300	600	0.58	4.90	4.10	50 or 100

G1921GHT... GARDEN HOSE THREADED ASSEMBLIES

Small hoses are typically used with backpack and small portable pumps to clean up spot fires. These 5/8" and 3/4" hoses are rated to 200 psi working pressure with a 600 psi burst.

Hose size	Thread type	Length	Part Number	Weight Each	PRICE EACH
Garden Hose Thread					
5/8"	Garden Hose Thread	15 ft	G1921-063GHT15	0.3 lb	\$39.60
5/8"	Garden Hose Thread	25	G1921-063GHT25	0.5	54.00
5/8"	Garden Hose Thread	30	G1921-063GHT30	0.6	69.40
5/8"	Garden Hose Thread	50	G1921-063GHT50	1.0	95.90
3/4"	Garden Hose Thread	15	G1921-075GHT15	0.45	41.20
3/4"	Garden Hose Thread	50	G1921-075GHT50	1.5	102.20



G1921GHT

HOW TO MEASURE A MALE FIRE HOSE THREAD

Take a strip of paper about 1" wide and wrap it around the male thread snugly so that it overlaps. Where the two ends overlap, use a pin to pierce the paper so that there is a hole in both ends. Press your thumb against the paper so that the threads leave an impression. Remove the paper and measure the distance between the pinholes. This distance, divided by 3.1416, equals the thread o.d. Count the number of thread impressions showing on the paper and divide by the total width of the impressions (in inches). This figure is the pitch in threads per inch.

FIRE HOSE

In 1½" most hoses are supplied in Canada with forestry instantaneous or NPSH parallel pipe threads. (in the USA and on international ships, the 1½" thread will be NST – also known as NH or ANSI).

Hose size	Thread type	Length	Part Number	Weight Each	PRICE EACH
1½" COUPLED FIRE HOSE ASSEMBLIES...					
G1921 Single Jacket					
1½"	G85 Forestry	50 ft	G1921-150F50	9 lb	\$119.00
1½"	G85 Forestry	100	G1921-150F100	17	199.00
1½"	G80B Brass NPSH	50	G1921-150B50	9	135.00
1½"	G80B Brass NPSH	75	G1921-150B75	13	175.00
1½"	G80B Brass NPSH	100	G1921-150B100	17	215.00
1½"	G80 Hardcoat NPSH	50	G1921-150NP50	9	140.00
1½"	G80 Hardcoat NPSH	100	G1921-150NP100	17	220.00

G1372 Rubber Cover					
1½"	G85 Forestry	50	G1372-150F50		210.40
1½"	G85 Forestry	100	G1372-150F100		382.70
1½"	G80B Brass NPSH	50	G1372-150B50		210.40
1½"	G80B Brass NPSH	100	G1372-150B100		382.70
1½"	G80 Hardcoat NPSH	50	G1372-150NP50		210.40
1½"	G80 Hardcoat NPSH	100	G1372-150NP100		382.70

G1942 Double Jacket					
1½"	G85 Forestry	50	G1942-150F50	17	159.00
1½"	G85 Forestry	100	G1942-150F100	33	279.00
1½"	G80B Brass NPSH	50	G1942-150B50	19	175.00
1½"	G80B Brass NPSH	100	G1942-150B100	37	295.00
1½"	G80 Hardcoat NPSH	50	G1942-150NP50	18	173.90

CAUTION: Single jacket fire hoses have no external cover to protect the reinforcement, and so will fail prematurely when dragged repeatedly. For washdown service, a better choice is double jacket hose, so the second jacket serves as a guard to protect the inner layer. Where hose is used regularly, G1372 Black Water Discharge hose provides the best overall value.



Please be sure to check that threaded fittings are compatible with the hydrant or standpipe to which the hose will be coupled. Municipalities and fire departments in different regions choose from a variety of available threads. For 2½", threads can vary by region. When you order 2½" assemblies, specify the thread required from the list shown.

Hose size	Length	Part Number	Weight	PRICE EACH
2½" COUPLED FIRE HOSE ASSEMBLIES...				
G1921 Single Jacket				
2½"	50	G1921-250***50	16 lb	\$227.60
2½"	100	G1921-250***100	29	347.60
G1942 Double Jacket				
2½"	50	G1942-250***50	31	312.60
2½"	100	G1942-250***100	60	517.60

***choose your couplings from the list below, and insert the appropriate code.

Code	Region	Description	O.D.	Pitch
BAT	BC & Alberta	BCST British Columbia Standard Thread & AMA Alberta Mutual Aid combined*	2.990"	8
CSA	Ontario	Canadian Standards Association	3.125"	5
NS1	Nova Scotia	Nova Scotia Zone 1	3.234"	5
QST	Quebec	QST and QMT Quebec/Montreal Combination Thread	3.031"	7
WCT	Saskatchewan & Manitoba	Western Canadian Fire Underwriters Association	3.250"	6

FIRE HOSE



G1923... SINGLE-JACKET 300 PSI FORESTRY

With a working pressure of 300 psi, G1923 has the same application as a double-jacket style hose while weighing only half as much. Featuring a yellow, high-visibility cover and a polyurethane liner, this single-jacket style hose can also handle some chemicals and petroleum-based products.

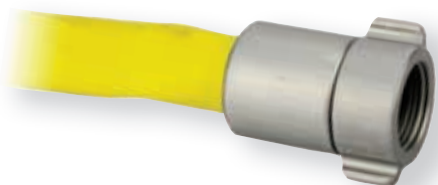
Tube: Clear polyurethane

Cover: Yellow, single jacket, circular woven polyester.

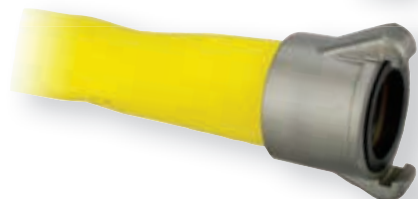
I.D.	Part Number	Bowl Size	Working Pressure	Test Pressure	Weight per ft	PRICE PER FOOT Cut	Std Length	Standard Lengths
1"	G1923-100	1 ³ / ₁₆ "	300 psi	600 psi	0.07 lb	\$2.40	\$2.10	50 or 100 ft
1 ¹ / ₂ "	G1923-150	1 ¹¹ / ₁₆ "	300	600	0.14	2.80	2.30	50 or 100

Our G1923 assemblies come complete with NPSH parallel pipe thread fittings in 1" sizes and forestry instantaneous fittings in 1¹/₂" sizes.

G1923NP



G1923F



Hose size	Length	Part Number	Weight	PRICE EACH
-----------	--------	-------------	--------	------------

1" COUPLED FIRE HOSE ASSEMBLIES...

1"	50 ft	G1923-100NP50	5 lb	\$151.00
----	-------	---------------	------	----------

1¹/₂" COUPLED FIRE HOSE ASSEMBLIES...

1 ¹ / ₂ "	50	G1923-150F50	9	162.10
1 ¹ / ₂ "	100	G1923-150F100	17	286.80

Wherever fire hose is used as a municipal water main by-pass during water main repairs, a potable water quality hose should be used. G1942BP is often used in conjunction with our G1031-075 by-pass hose to connect municipal water customers during water main replacement. Potable water hoses should also be specified for water tanker fill and delivery lines.

G1942BP



G1942BP... DOUBLE-JACKET POTABLE WATER HOSE

Tube: Food grade polyurethane. Finished product meets MIL-H-24606B standards for potable water use.

Cover: Two layers of polyester yarn with blue polymer impregnation for increased abrasion resistance.

I.D.	Part Number	Bowl Size	Working Pressure	Test Pressure	Weight per ft	PRICE PER FOOT Cut	Std Length	Standard Lengths
1 ¹ / ₂ "	G1942BP-150	1 ¹⁵ / ₁₆ "	300 psi	600 psi	0.35 lb	\$6.00	\$5.20	100 ft
2 ¹ / ₂ "	G1942BP-250	3	300	600	0.44	10.40	8.90	25 or 50

2¹/₂" COUPLED POTABLE WATER ASSEMBLIES

Hose size	Length	Part Number	Weight	PRICE EACH
2 ¹ / ₂ "	50 ft	G1942BP-250BAT50	25 lb	\$536.60

Note: Other thread styles are available depending on region.

