

SWIVEL JOINTS

Swivel joints consist of an external barrel over a stem. For 90° swivels, the swivel rotates on two journal bearings while straight swivels feature a radial thrust bearing. Please note, these products are for liquid transfer in fluid power systems only.

Pressure Rating: Full vacuum up to 3000 psi.

Temperature Range: -35°C to 120°C (-31°F to 248°F)

0515X... MALE TO FEMALE JIC LIVE SWIVEL



Part Number	Body Size	Female JIC	Male JIC
0515X-06-06	3/8"	9/16-18	9/16-18
0515X-08-08	3/8"	3/4-16	3/4-16
0515X-10-10	1/2"	7/8-14	7/8-14
0515X-12-12	1/2"	1 1/16-12	1 1/16-12
0515X-16-16	1"	1 5/16-12	1 5/16-12
0515X-20-20	1 1/4"	1 5/8-12	1 5/8-12

0808X... FEMALE NPT LIVE SWIVEL



Part Number	Body Size	Female Pipe	Female Pipe
0808X-04-04	3/8"	1/4-18	1/4-18
0808X-06-06	3/8"	3/8-18	3/8-18
0808X-08-08	1/2"	1/2-14	1/2-14
0808X-12-12	1/2"	3/4-14	3/4-14
0808X-16-16	1"	1-1 1/2	1-1 1/2

1608X... MALE TO FEMALE NPT LIVE SWIVEL



Part Number	Body Size	Male Pipe	Female Pipe
1608X-04-04	3/8"	1/4-18	1/4-18
1608X-06-06	3/8"	3/8-18	3/8-18
1608X-08-08	1/2"	1/2-14	1/2-14
1608X-12-12	3/4"	3/4-14	3/4-14
1608X-16-16	1"	1-1 1/2	1-1 1/2
1608X-20-20	1 1/4"	1 1/4-1 1/2	1 1/4-1 1/2

93093X... MALE ORFS LIVE SWIVEL



Part Number	Body Size	Male ORFS	Male ORFS
93093X-08-08	1/2"	1 3/16-16	1 3/16-16
93093X-12-12	3/4"	1 7/16-12	1 7/16-12

0691X... MALE ORB TO FEMALE NPSM LIVE SWIVEL



Part Number	Body Size	Stem Male ORB	Barrel Female Pipe Swivel
0691X-16-16	1"	1 5/16-12	1-1 1/2

0696X... MALE NPT TO FEMALE NPSM 90° LIVE SWIVEL



Part Number	Body Size	Stem Male Pipe	Barrel Female Pipe Swivel
0696X-04-04	3/8"	1/4-18	1/4-18
0696X-06-06	3/8"	3/8-18	3/8-18
0696X-08-08	1/2"	1/2-14	1/2-14
0696X-12-12	3/4"	3/4-14	3/4-14
0696X-16-16	1"	1-1 1/2	1-1 1/2
0696X-20-20	1 1/4"	1 1/4-1 1/2	1 1/4-1 1/2

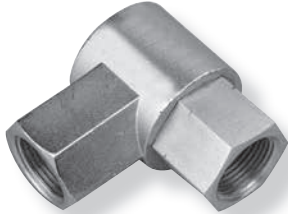
0698X... NPSM TO NPT 90° LIVE SWIVEL



Part Number	Body Size	Stem Female Pipe	Barrel Female Pipe Swivel
0698X-04-04	3/8"	1/4-18	1/4-18
0698X-06-06	3/8"	3/8-18	3/8-18
0698X-08-08	1/2"	1/2-14	1/2-14
0698X-12-12	3/4"	3/4-14	3/4-14
0698X-16-16	1"	1-1 1/2	1-1 1/2

SWIVEL JOINTS

0898X... FEMALE NPT 90° LIVE SWIVEL



Part Number	Body Size	Stem Female Pipe	Barrel Female JIC
0898X-06-06	3/8"	3/8-18	3/8-18
0898X-08-08	1/2"	1/2-14	1/2-14
0898X-12-12	3/4"	3/4-14	3/4-14
0898X-16-16	1"	1-11 1/2	1-11 1/2

1195X... MALE ORB TO MALE JIC 90° LIVE SWIVEL



Part Number	Body Size	Stem Male ORB	Barrel Male JIC
1195X-06-06	3/8"	9/16-18	9/16-18
1195X-08-08	3/8"	3/4-16	3/4-16
1195X-10-10	1/2"	7/8-14	7/8-14
1195X-12-12	3/4"	1 1/16-12	1 1/16-12
1195X-16-16	1"	1 5/16-12	1 5/16-12

1595X... MALE JIC 90° LIVE SWIVEL



Part Number	Body Size	Stem Male JIC	Barrel Male JIC
1595X-06-06	3/8"	9/16-18	9/16-18
1595X-08-08	3/8"	3/4-16	3/4-16
1595X-10-10	1/2"	7/8-14	7/8-14
1595X-12-12	3/4"	1 1/16-12	1 1/16-12
1595X-16-16	1"	1 5/16-12	1 5/16-12
1595X-20-20	1 1/4"	1 5/8-12	1 5/8-12

1596X... MALE JIC TO MALE NPT 90° LIVE SWIVEL



Part Number	Body Size	Stem Male Pipe	Barrel Male JIC
1596X-06-06	3/8"	3/8-18	9/16-18
1596X-06-08	3/8"	3/8-18	3/4-16
1596X-08-08	1/2"	1/2-14	3/4-16
1596X-08-10	1/2"	1/2-14	7/8-14
1596X-12-12	3/4"	3/4-14	1 1/16-12
1596X-16-16	1"	1-11 1/2	1 5/16-12
1596X-20-20	1 1/4"	1 1/4-11 1/2	1 5/8-12

1598X... MALE JIC TO FEMALE NPT 90° LIVE SWIVEL



Part Number	Body Size	Stem Male JIC	Barrel Female Pipe
1598X-16-16	1"	1 5/16-12	1-11 1/2

93911X... MALE ORB TO MALE ORFS 90° LIVE SWIVEL



Part Number	Body Size	Stem Male ORB	Barrel Male ORFS
93911X-04-04	3/8"	9/16-18	7/16-20
93911X-06-06	3/8"	9/16-18	1 1/16-16
93911X-08-08	1/2"	1 1/16-12	1 3/16-16
93911X-12-08	1/2"	3/4-16	1 3/16-16

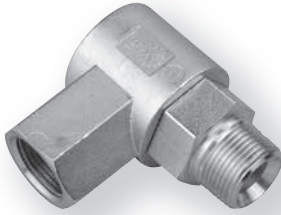
1696X... MALE NPT 90° LIVE SWIVEL



Part Number	Body Size	Stem Male Pipe	Barrel Male Pipe
1696X-08-08	1/2"	1/2-14	1/2-14
1696X-12-12	3/4"	3/4-14	3/4-14
1696X-16-16	1"	1-11 1/2	1-11 1/2

SWIVEL JOINTS

1698X... MALE NPT TO FEMALE NPT 90° LIVE SWIVEL



Part Number	Body Size	Stem Female Pipe	Barrel Male Pipe
1698X-04-04	3/8"	1/4-18	1/4-18
1698X-06-06	3/8"	3/8-18	3/8-18
1698X-08-08	1/2"	1/2-14	1/2-14
1698X-16-16	1"	1-11 1/2	1-11 1/2
1698X-20-20	1 1/4"	1 1/4-11 1/2	1 1/4-11 1/2

0896X... FEMALE NPT STEM TO MALE NPT BARREL LIVE SWIVEL



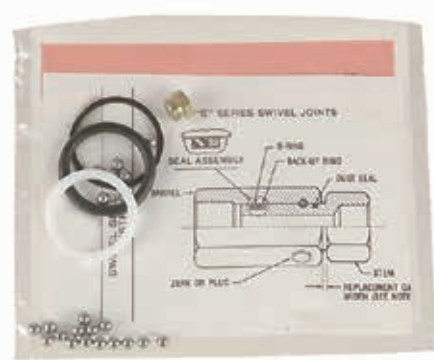
Part Number	Body Size	Stem Male Pipe	Barrel Female Pipe
0896X-08-08	1/2"	1/2-14	1/2-14
0896X-16-16	1"	1-11 1/2	1-11 1/2

0898XHD... FEMALE NPT 90° HEAVY-DUTY SWIVEL



Part Number	Female Pipe	Working Pressure
0898XHD-08-08	1/2-14	5000 psi
0898XHD-12-12	3/4-14	4500
0898XHD-16-16	1-11 1/2	4000

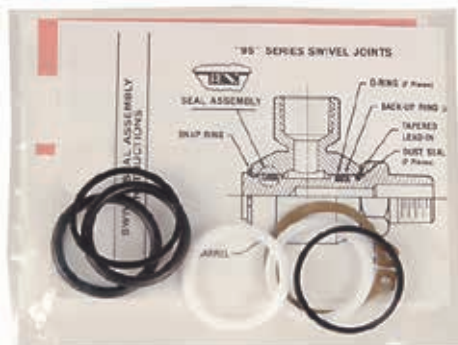
0000X... STRAIGHT SWIVEL REPAIR KIT



Note: Order Repair Kits with body size matching swivel

Part Number	Reference No.	Swivel Body Size
0000X-06	S6	3/8"
0000X-08	S8	1/2"
0000X-12	S12	3/4"
0000X-16	S16	1"
0000X-20	S20	1 1/4"

0090X... 90° SWIVEL REPAIR KIT



Note: Order Repair Kits with body size matching swivel

New Part No.	Reference No.	Swivel Body Size
0090X-06	9S6	3/8"
0090X-08	9S8	1/2"
0090X-12	9S12	3/4"
0090X-16	9S16	1"
0090X-20	9S20	1 1/4"